

Lectotypification of *Porpax scaposa* (Orchidaceae)

SANTI WATTHANA^{1,*} & SOMRAN SUDDEE²

ABSTRACT

Porpax scaposa is lectotypified. This species is endemic to northern Thailand, and was based on *Garrett 717* (BKF, K) when published. We here select the Kew sheet, K000913725, as the lectotype.

KEYWORDS: Lectotype, taxonomy, Thailand.

Accepted for publication: 27 October 2020. Published online: 16 November 2020

INTRODUCTION

The genus *Porpax* Lindl. (Orchidaceae, tribe Podochileae) was established by Lindley (1845) based on *Porpax reticulata* Lindl. Recently, Ng *et al.* (2018) published a phylogenetic tree of Podochileae based on molecular data and accepted *Porpax* as a valid genus while expanding it to include *Conchidium* Griff. and *Stolzia* Schltr. Govaerts *et al.* (2020) listed 52 species under *Porpax* in the World Checklist of Selected Plant Families (WCSP). Seidenfaden (1977) revised *Porpax sensu stricto* (i.e., excluding *Conchidium* and *Stolzia*), recognising 10 species, including two new species. Subsequently, he published one more new species from Thailand (Seidenfaden, 1981) and prepared a synopsis of this genus for Thailand with a total of seven species (Seidenfaden, 1986).

Porpax scaposa Seidenf. was published in 1977 based on *Garret 717* (**BKF, K**) from Doi Pha Khao, Chiang Mai, Thailand, which was collected on 3 September 1931. According to the International Code of Nomenclature for algae, fungi, and plants (ICN), the name needs lectotypification.

LECTOTYPIIFICATION

Porpax scaposa Seidenf., Bot. Tidsskr. 72: 11, Fig. 10. 1977; Opera Bot. 89: 123, fig. 75. 1986. Type: Thailand, Chiang Mai, Doi Inthanon National Park,

Doi Pha Khao, 1,450–1,560 m, *Garrett 717* (lectotype **K** [K000913725!], selected here (Fig. 1); isolectotype **BKF!**).

Note.— We select the sheet in **K** [K000913725] as the lectotype of *Porpax scaposa*, because it is a better sheet with more pseudobulbs, leaves and flowers.

ACKNOWLEDGEMENT

We would like to thank the editor and the reviewers for their comments on the manuscript.

REFERENCES

- Ng, Y., Schuiteman, A., Pedersen H.Æ., Petersen, G., Watthana, S., Seberg, O., Pridgeon, A.M., Cribb, P.J. & Chase, M.W. (2018). Phylogenetics and systematics of *Eria* and related genera (Orchidaceae: Podochileae). Botanical Journal of the Linnean Society 186, 179–201.
- Govaerts, R., Bernet, P., Kratochvil, K., Gerlach, G., Carr, G., Alrich, P., Pridgeon, A.M., Pfahl, J., Campacci, M.A., Holland Baptista, D., Tigges, H., Shaw, J., Cribb, P., George, A., Kreutz, K. & Wood, J.J. (2020). World Checklist of Orchidaceae. Facilitated by the Royal Botanic Gardens, Kew. Published on the Internet; <http://apps.kew.org/wcsp/>. Last retrieved 20 May 2020.

¹ Suranaree University of Technology, Nakhon Ratchasima 3000, Thailand.

² Forest Herbarium, Department of National Parks, Wildlife and Plant Conservation, Chatuchak, Bangkok 10900, Thailand.

* Corresponding author: santiqbg@gmail.com

Lindley, J. (1845). *Porpax reticulata*. Edwards's Botanical Register 31(Misc.): 62.

Seidenfaden, G. (1977). Contribution to the orchid flora of Thailand 8. Botanisk Tidsskrift 72(1): 1–14.

Seidenfaden, G. (1981). Contributions to the orchid flora of Thailand 9. Nordic Journal of Botany. 1: 192–217.

_____. (1986). Orchid Genera in Thailand XIII. Thirty-three epidendroid Genera. Opera Botanica 89: 118–123.

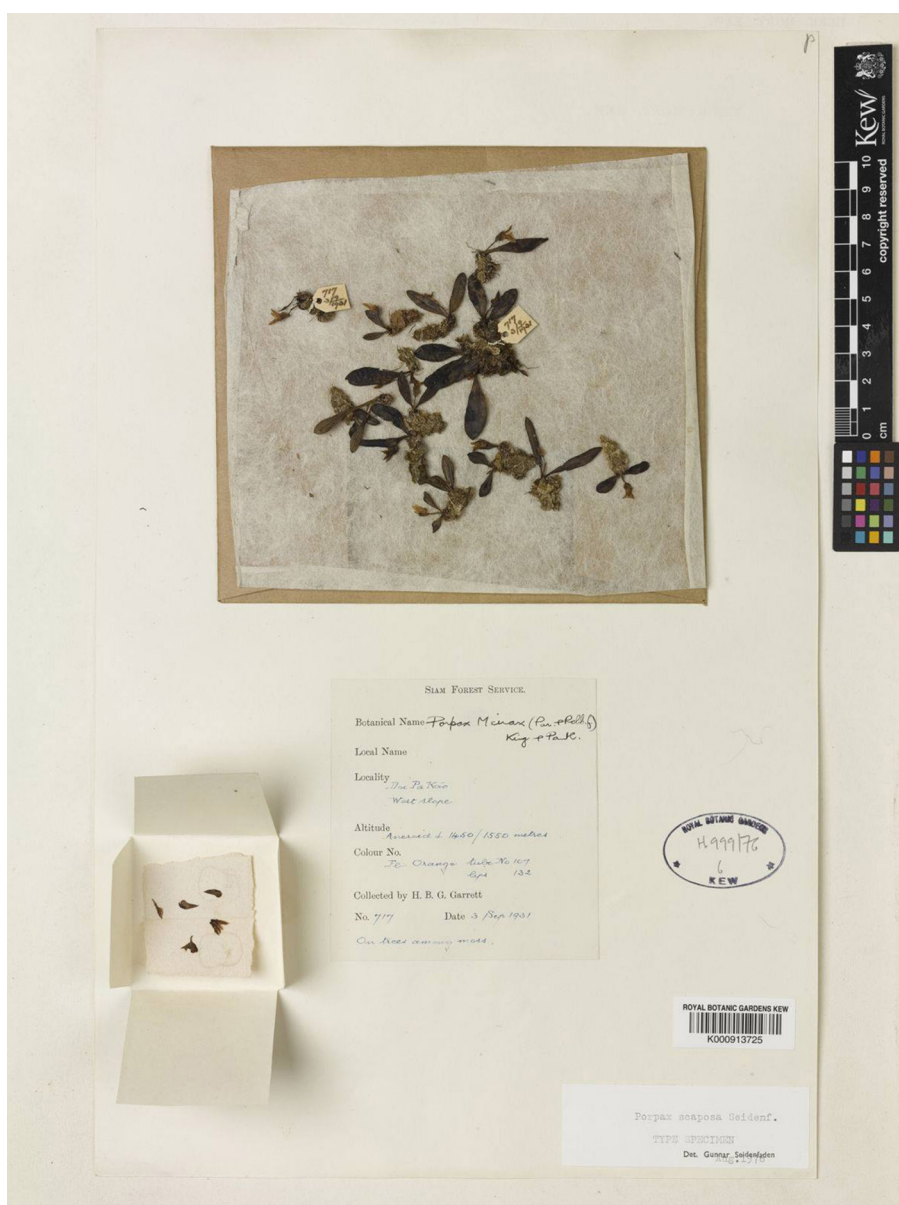


Figure 1. Lectotype of *Porpax scaposa* Seidenf. Image © The Trustees of the Royal Botanic Gardens, Kew.