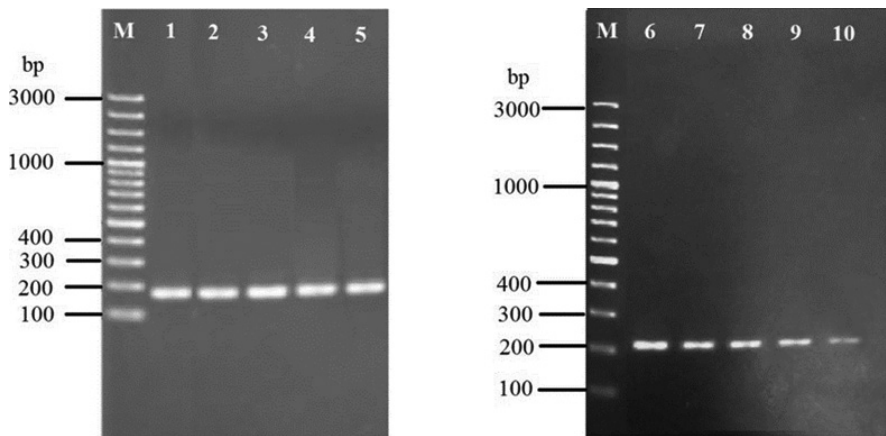
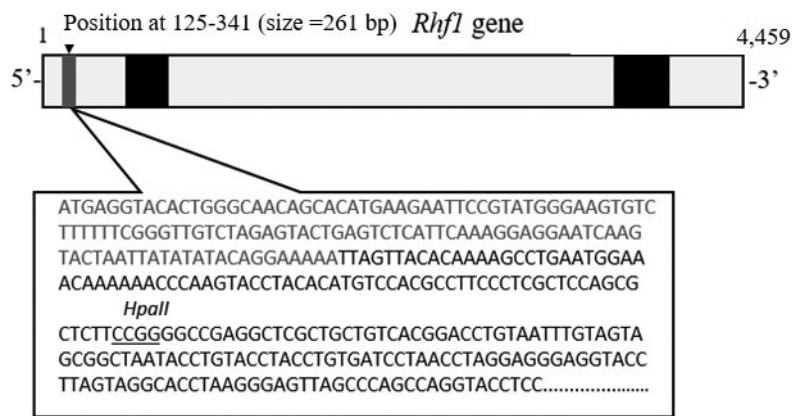


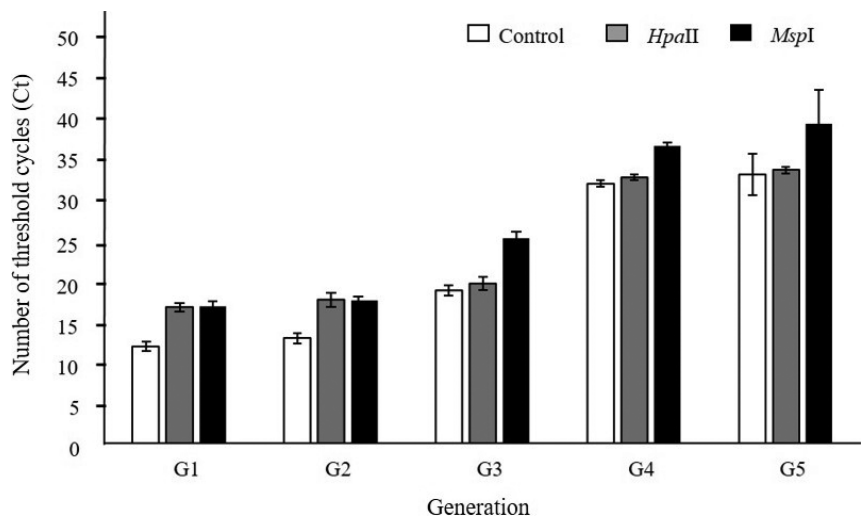
Supplementary Figures



**Fig. S1** Bands of gene fragments of *Cordyceps militaris* during subculturing (G1–5) using 1.5% agarose gel electrophoresis, where lane M = 100 bp plus ladder. Lanes 1–5 = *actin* (172 bp) and lanes 6–10 = *Rhf1* (216 bp)



**Fig. S2** Nucleotide sequence of the *Rhf1* gene (4,459 bp) comprising of three exons (gray) and two introns (black); Note the DNA methylation site indicated at 125–341 bp containing *HpaII* recognition site



**Fig. S3** Quantitative polymerase chain reaction threshold cycles (mean  $\pm$  SD of five replicates) derived from *Rhf1* gene amplification for five generations